

Craniocerebral trauma

Owing to the high transport density in the heavily populated Ruhr area, numerous patients with craniocerebral trauma are admitted to our department. Depending on the severity of the trauma, the patients may have circumscribed hemorrhagic areas requiring surgical removal (e.g. epidural or subdural hematomas) or brain swelling and diffuse cerebral bleeding.

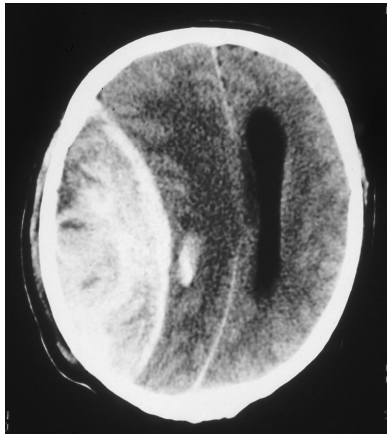


Fig.: Life-threatening epidural hematoma

We also provide care to patients with craniocerebral traumas at the BG Kliniken Duisburg.